



NATIONAL TEST REPORT  
(BS 6180 : 2011)

# EASY GLASS<sup>®</sup> HYBRID POST FASCIA MOUNT

TESTED GLASS: 8 MM MONOLOTTIC AND 8,76 MM LAMINATED GLASS

TOTAL RAILING HEIGHT 1.100 MM

## TEST REPORT

**Lucideon Reference:** 151599 (QT35930/1/SL)/Ref. 1/Supp1

**Project Title:** Testing of Easy Glass Hybrid System Fascia Mount in Accordance with BS 6180:2011 Barriers in and about Buildings

**Client:** Q-railing Europe GmbH & Co.KG  
Marie-Curie-Strasse 8-14  
Emmerich am Rhein  
D-46446  
Germany

**For the Attention of:** Mr Samuel Hanna

**Author(s):** Miss Lisa Cobden

**Report Date:** 03 July, 2015

**Purchase Order No.:** N/A

---

**Work Location:** Lucideon UK

---

This report supersedes the report issued on 15.05.15.



Mr Dave Boon  
**Consultancy Team**  
**Reviewer**



Miss Lisa Cobden  
**Consultancy Team**  
**Project Manager**



**CONTENTS**

	<b>Page</b>
<b>1 INTRODUCTION</b>	<b>3</b>
<b>2 TEST SAMPLES</b>	<b>3</b>
<b>3 TEST PROGRAMME</b>	<b>3</b>
<b>4 TEST METHOD</b>	<b>3</b>
<b>5 RESULTS</b>	<b>4</b>
<b>TABLES</b>	<b>5-13</b>
<b>PLATE</b>	<b>14-16</b>
<b>CHARTS</b>	<b>17-24</b>
<b>APPENDIX - Figures</b>	

## 1 INTRODUCTION

Lucideon were commissioned by the client, Q-railing Europe GmbH and Co KG, to carry out load testing in accordance with BS 6180:2011 Barriers in and about buildings, to allow their balustrade system to be classified for use in accordance with the Code of Practice included within the standard.

The testing was carried out at Q-railing Europe GmbH and Co KG's facilities at 8-14 Marie-Curie Straße 46446 Emmerich am Rhein Germany.

This report summarises the test results obtained during the test programme and does not provide interpretation of those results.

## 2 TEST SAMPLES

The post and infill system tested was designated as Easy Glass Hybrid System Fascia Mount. The system incorporated two Cap rails of differing dimensions. The system is shown in the Figures contained in the Appendix.

The channel was installed by Q-railing personnel.

## 3 TEST PROGRAMME

A horizontal line load was applied to the infill system with the span between posts set at the following distances:

- Facia Mount Incorporating 65 mm x 40 mm Hand rail;
  - 1.6 m span between posts.
  - 2.0 m span between posts.
  - 2.5 m span between posts.
  - 3.0 m span between posts.
  
- Facia Mount Incorporating 33 mm x 39 mm Hand rail
  - 1.5 m span between posts.
  - 1.7 m span between posts.
  - 2.0 m span between posts.
  - 2.5 m span between posts.
  - 3.0 m span between posts.

## 4 TEST METHOD

The channel was bolted to the top of a concrete block, which was fixed to the floor of the test facility. The channel was bolted to the block at appropriate centres by the client and the posts were bolted to the side of the concrete block at the correct specified spans using the appropriate fixings.

An 8 mm monolithic glass panel of appropriate length was fitted into the channel using an inlay and rubber seals. (Fixing details for the systems are shown in Figures contained in the Appendix)

A horizontal imposed line load was applied to the infill system at a height of 1.1 m above the datum level of the floor and the deflection measured at the top central point of the panel 1.1 m above the datum level of the floor. The load was applied via a hydraulic ram and measured using a calibrated load cell. Deflection was measured using a linear voltage displacement transducer (Plate 1 shows the general test set up).

In addition a point load was applied to the centre point of the glass infill, as this was deemed the worst case scenario, via a hydraulic ram and 100 mm by 100 mm spreader plate. For the point load the linear voltage displacement transducer measured the deflection from the centre of the glass infill panel.

## 5 RESULTS

The tests were carried out in accordance with the guidance given in BS 6180 Barriers in and about buildings – Code of Practice. The standard states that the maximum allowable deflection for a free standing glass protective barrier panel is 25 mm.

Table 2 of BS 6180 Barriers in and about buildings – Code of Practice categorises parapets, barriers and balustrades for areas of use depending on the loads they have achieved under testing.

The loads achieved by the Q-railing Europe GmbH and Co KG post and infill system tested under horizontal imposed line load to the maximum deflection of 25 mm are given in Tables 1 and 2.

The loads achieved by the Q-railing Europe GmbH and Co KG post and infill system tested under point load are given in Table 3

All figures quoted in the Tables contain no safety factors and are direct loads as achieved by the system under test conditions.

Tables 4 to 7 summarise the suitability of the tested systems in accordance with Table 2 of BS 6180:2011.

**NOTE: The results given in this report apply only to the samples that have been tested.**

**END OF REPORT**



**Table 1** - Summary of Performance of Q-railing Europe GmbH and Co. KG Post and Infill System Tested under Horizontal Imposed Line Load

Cap Rail	Glass Span	Imposed Line Load at 25 mm Deflection (kN/m)	Working Line Load for System (kN/m)	Deflection at Working Line Load for System (mm)
33 mm x 39 mm Hand Rail	1.5 m	3.80	3.00	19.20
	1.7 m	1.74	1.50	21.83
	2.0 m	1.29	0.74	11.73
	2.5 m	0.56	0.36	13.51
	3.0 m	0.36	0.36	25.00

**Table 2** - Summary of Performance of Q-railing Europe GmbH and Co. KG Post and Infill System Tested under Horizontal Imposed Line Load

Cap Rail	Glass Span	Imposed Line Load at 25 mm Deflection (kN/m)	Working Line Load for System (kN/m)	Deflection at Working Line Load for System (mm)
65 mm x 40 mm Hand Rail	1.6 m	3.00	3.00	25.00
	2.0 m	1.81	1.50	20.20
	2.5 m	0.86	0.74	20.63
	3.0 m	0.49	0.36	16.37

**Table 3** - Summary of Performance of Q-railing Europe GmbH and Co. KG Post and Infill System Tested under Point Loads

System	Description	Working Point Load for System (kN)	Deflection at Working Point Load for System (mm)
65 mm Cap Rail	500 mm span 8 mm Monolithic Glass	1.5	14.49
	900 mm span 8 mm Monolithic Glass	1.5	12.14
65 mm Cap Rail	500 mm span 8.76 mm Tempered Laminated Glass	1.5	15.13
	750 mm span 8.76 mm Tempered Laminated Glass	1.5	11.13
33 mm Cap Rail	500 mm span 8.76 mm Tempered Laminated Glass	1.5	16.57

**Table 4 - Summary of Suitability of Q-railing Europe Systems in Accordance with Table 2 of BS 6180:2011**

Type of Occupancy for Part of the Building	Examples of Specific Use	Horizontal Uniformly Distributed Line Load (kN/m)	Easy Glass Hybrid Fascia System 33 mm Hand Rail				
			1.5 m	1.7 m	2.0 m	2.5 m	3.0 m
Domestic and residential activities	(i) all areas within or serving exclusively one single family dwelling including stairs, landings, etc but excluding external balconies and edges of roofs	0.36	✓	✓	✓	✓	✓
	(ii) other residential, i.e. houses of multiple occupancy and balconies, including Juliette balconies and edges of roofs in single family dwellings	0.74	✓	✓	✓	X	X
Offices and work areas not included elsewhere, including storage areas	(iii) light access stairs and gangways not more than 600 mm wide	0.22	✓	✓	✓	✓	✓
	(iv) light pedestrian traffic routes in industrial and storage buildings except designated escape routes	0.36	✓	✓	✓	✓	✓
	(v) areas not susceptible to overcrowding in office and institutional buildings, also industrial and storage buildings except as given above	0.74	✓	✓	✓	X	X
Areas where people might congregate	(vi) areas having fixed seating within 530 mm of the barrier, balustrade or parapet	1.50	✓	✓	X	X	X
Areas with tables or fixed seating	(vii) restaurants and bars	1.50	✓	✓	X	X	X
Areas without obstacles for moving people and not susceptible to overcrowding	(viii) stairs, landings corridors ramps	0.74	✓	✓	✓	X	X
	(ix) external balconies including Juliette balconies and edges of roofs; footways and pavements within building cartilage adjacent to basement/sunken areas	0.74	✓	✓	✓	X	X

Type of Occupancy for Part of the Building	Examples of Specific Use	Horizontal Uniformly Distributed Line Load (kN/m)	Easy Glass Hybrid Fascia System 33 mm Hand Rail				
			1.5 m	1.7 m	2.0 m	2.5 m	3.0 m
Areas susceptible to overcrowding	(x) footways or pavements less than 3 m wide adjacent to sunken areas	1.50	✓	✓	X	X	X
	(xi) theatres, cinemas, discotheques, bars, auditoria, shopping malls, assembly areas, studios; footways or pavements greater than 3 m wide adjacent to sunken areas	3.00	✓	X	X	X	X
	(xii) grandstands and stadia	(Note 1)	-	-	-	-	-
Retail areas	(xiii) all retail areas including public areas of banks/building societies or betting shops	1.50	✓	✓	X	X	X
Vehicular	(xiv) pedestrian areas in car parks, including stairs, landings, ramps, edges of internal floors, footways, edges of roofs	(Note 2)	X	X	X	X	X
	(xv) horizontal loads imposed by vehicles	(Note 2)	X	X	X	X	X

**Table 5 - Summary of Suitability of Q-railing Europe Systems in Accordance with Table 2 of BS 6180:2011**

Type of Occupancy for Part of the Building	Examples of Specific Use	Horizontal Uniformly Distributed Line Load (kN/m)	Easy Glass Hybrid Fascia System 65 mm Hand Rail			
			1.6 m	2.0 m	2.5 m	3.0 m
Domestic and residential activities	(i) all areas within or serving exclusively one single family dwelling including stairs, landings, etc but excluding external balconies and edges of roofs	0.36	✓	✓	✓	✓
	(ii) other residential, i.e. houses of multiple occupancy and balconies, including Juliette balconies and edges of	0.74	✓	✓	✓	X



Type of Occupancy for Part of the Building	Examples of Specific Use	Horizontal Uniformly Distributed Line Load (kN/m)	Easy Glass Hybrid Fascia System 65 mm Hand Rail			
			1.6 m	2.0 m	2.5 m	3.0 m
	roofs in single family dwellings					
Offices and work areas not included elsewhere, including storage areas	(iii) light access stairs and gangways not more than 600 mm wide	0.22	✓	✓	✓	✓
	(iv) light pedestrian traffic routes in industrial and storage buildings except designated escape routes	0.36	✓	✓	✓	✓
	(v) areas not susceptible to overcrowding in office and institutional buildings, also industrial and storage buildings except as given above	0.74	✓	✓	✓	X
Areas where people might congregate	(vi) areas having fixed seating within 530 mm of the barrier, balustrade or parapet	1.50	✓	✓	X	X
Areas with tables or fixed seating	(vii) restaurants and bars	1.50	✓	✓	X	X
Areas without obstacles for moving people and not susceptible to overcrowding	(viii) stairs, landings corridors ramps	0.74	✓	✓	✓	X
	(ix) external balconies including Juliette balconies and edges of roofs; footways and pavements within building cartilage adjacent to basement/sunken areas	0.74	✓	✓	✓	X
Areas susceptible to overcrowding	(x) footways or pavements less than 3 m wide adjacent to sunken areas	1.50	✓	✓	X	X
	(xi) theatres, cinemas, discotheques, bars, auditoria, shopping malls, assembly areas, studios; footways or pavements greater than 3 m wide adjacent to sunken areas	3.00	✓	X	X	X
	(xii) grandstands and stadia	(Note 1)	-	-	-	-

Type of Occupancy for Part of the Building	Examples of Specific Use	Horizontal Uniformly Distributed Line Load (kN/m)	Easy Glass Hybrid Fascia System 65 mm Hand Rail			
			1.6 m	2.0 m	2.5 m	3.0 m
Retail areas	(xiii) all retail areas including public areas of banks/building societies or betting shops	1.50	✓	✓	X	X
Vehicular	(xiv) pedestrian areas in car parks, including stairs, landings, ramps, edges of internal floors, footways, edges of roofs	(Note 2)	X	X	X	X
	(xv) horizontal loads imposed by vehicles	(Note 2)	X	X	X	X

Note 1 – See requirements of the appropriate certifying authority

Note 2 – Clause 8.1.1 of BS 6180:2011 states that “glass should not be used for vehicle protection barriers”

**Table 6** - Summary of Suitability of Q-railing Europe Systems in Accordance with Table 2 of BS 6180:2011

Type of Occupancy for Part of the Building	Examples of Specific Use	A Point Load Applied to Part of the Infill (kN)	Easy Glass Hybrid Fascia System 65 mm Cap Rail	
			500 mm Span 8 mm Monolithic Glass	900 mm Span 8 mm Monolithic Glass
Domestic and residential activities	(i) all areas within or serving exclusively one single family dwelling including stairs, landings, etc but excluding external balconies and edges of roofs	0.25	✓	✓
	(ii) other residential, i.e. houses of multiple occupancy and balconies, including Juliette balconies and edges of roofs in single family dwellings	0.50	✓	✓
Offices and work areas not included elsewhere, including storage areas	(iii) light access stairs and gangways not more than 600 mm wide	0.25	✓	✓
	(iv) light pedestrian traffic routes in industrial and storage buildings except designated escape routes	0.25	✓	✓



Type of Occupancy for Part of the Building	Examples of Specific Use	A Point Load Applied to Part of the Infill (kN)	Easy Glass Hybrid Fascia System 65 mm Cap Rail	
			500 mm Span 8 mm Monolithic Glass	900 mm Span 8 mm Monolithic Glass
	(v) areas not susceptible to overcrowding in office and institutional buildings, also industrial and storage buildings except as given above	0.50	✓	✓
Areas where people might congregate	(vi) areas having fixed seating within 530 mm of the barrier, balustrade or parapet	1.50	✓	✓
Areas with tables or fixed seating	(vii) restaurants and bars	1.50	✓	✓
Areas without obstacles for moving people and not susceptible to overcrowding	(viii) stairs, landings corridors ramps	0.50	✓	✓
	(ix) external balconies including Juliette balconies and edges of roofs; footways and pavements within building cartilage adjacent to basement/sunken areas	0.50	✓	✓
Areas susceptible to overcrowding	(x) footways or pavements less than 3 m wide adjacent to sunken areas	1.50	✓	✓
	(xi) theatres, cinemas, discotheques, bars, auditoria, shopping malls, assembly areas, studios; footways or pavements greater than 3 m wide adjacent to sunken areas	1.50	✓	✓
	(xii) grandstands and stadia	(Note 1)	-	-
Retail areas	(xiii) all retail areas including public areas of banks/building societies or betting shops	1.50	✓	✓
Vehicular	(xiv) pedestrian areas in car parks, including stairs, landings, ramps, edges of internal floors, footways, edges of roofs	(Note 2)	X	X
	(xv) horizontal loads imposed by vehicles	(Note 2)	X	X

**Table 7 - Summary of Suitability of Q-railing Europe Systems in Accordance with Table 2 of BS 6180:2011**

Type of Occupancy for Part of the Building	Examples of Specific Use	A Point Load Applied to Part of the Infill (kN)	Easy Glass Hybrid Fascia		
			65 mm Cap Rail		33 mm Cap Rail
			500 mm Span 8.76 mm Tempered Laminated Glass	750 mm span 8.76 mm Tempered Laminated Glass	500 mm Span 8.76 mm Tempered Laminated Glass
Domestic and residential activities	(i) all areas within or serving exclusively one single family dwelling including stairs, landings, etc but excluding external balconies and edges of roofs	0.25	✓	✓	✓
	(ii) other residential, i.e. houses of multiple occupancy and balconies, including Juliette balconies and edges of roofs in single family dwellings	0.50	✓	✓	✓
Offices and work areas not included elsewhere, including storage areas	(iii) light access stairs and gangways not more than 600 mm wide	-	-	-	-
	(iv) light pedestrian traffic routes in industrial and storage buildings except designated escape routes	0.25	✓	✓	✓
	(v) areas not susceptible to overcrowding in office and institutional buildings, also industrial and storage buildings except as given above	0.50	✓	✓	✓
Areas where people might congregate	(vi) areas having fixed seating within 530 mm of the barrier, balustrade or parapet	1.50	✓	✓	✓



Type of Occupancy for Part of the Building	Examples of Specific Use	A Point Load Applied to Part of the Infill (kN)	Easy Glass Hybrid Fascia		
			65 mm Cap Rail		33 mm Cap Rail
			500 mm Span 8.76 mm Tempered Laminated Glass	750 mm span 8.76 mm Tempered Laminated Glass	500 mm Span 8.76 mm Tempered Laminated Glass
Areas with tables or fixed seating	(vii) restaurants and bars	1.50	✓	✓	✓
Areas without obstacles for moving people and not susceptible to overcrowding	(viii) stairs, landings corridors ramps	0.50	✓	✓	✓
	(ix) external balconies including Juliette balconies and edges of roofs; footways and pavements within building cartilage adjacent to basement/sunken areas	0.50	✓	✓	✓
Areas susceptible to overcrowding	(x) footways or pavements less than 3 m wide adjacent to sunken areas	1.50	✓	✓	✓
	(xi) theatres, cinemas, discotheques, bars, auditoria, shopping malls, assembly areas, studios; footways or pavements greater than 3 m wide adjacent to sunken areas	1.50	✓	✓	✓
	(xii) grandstands and stadia	(Note 1)	-	-	-
Retail areas	(xiii) all retail areas including public areas of banks/building societies or betting shops	1.50	✓	✓	✓
Vehicular	(xiv) pedestrian areas in car parks, including stairs, landings, ramps, edges of internal floors, footways,	(Note 2)	X	X	X



Type of Occupancy for Part of the Building	Examples of Specific Use	A Point Load Applied to Part of the Infill (kN)	Easy Glass Hybrid Fascia		
			65 mm Cap Rail		33 mm Cap Rail
			500 mm Span 8.76 mm Tempered Laminated Glass	750 mm span 8.76 mm Tempered Laminated Glass	500 mm Span 8.76 mm Tempered Laminated Glass
	edges of roofs				
	(xv) horizontal loads imposed by vehicles	(Note 2)	X	X	X

Note 1 – See requirements of the appropriate certifying authority

Note 2 – Clause 8.1.1 of BS 6180:2011 states that “glass should not be used for vehicle protection barriers”



**Plate 1 - Generic Test Arrangement Line Load**

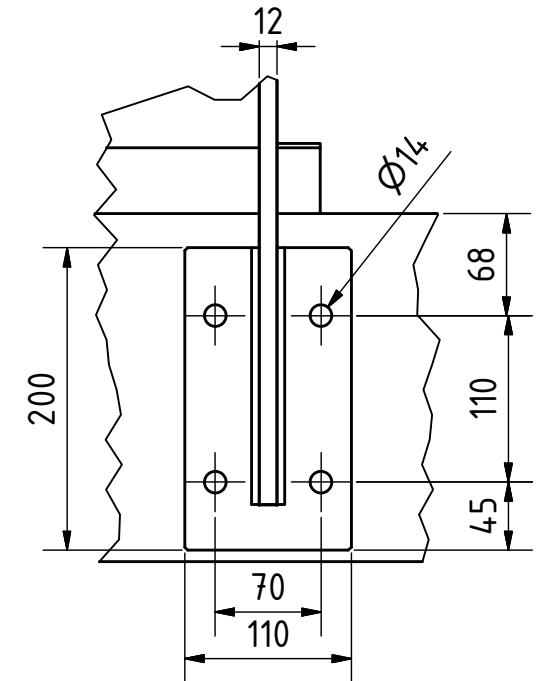
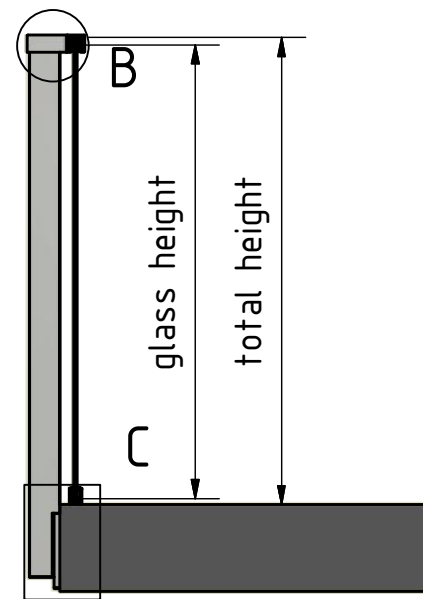
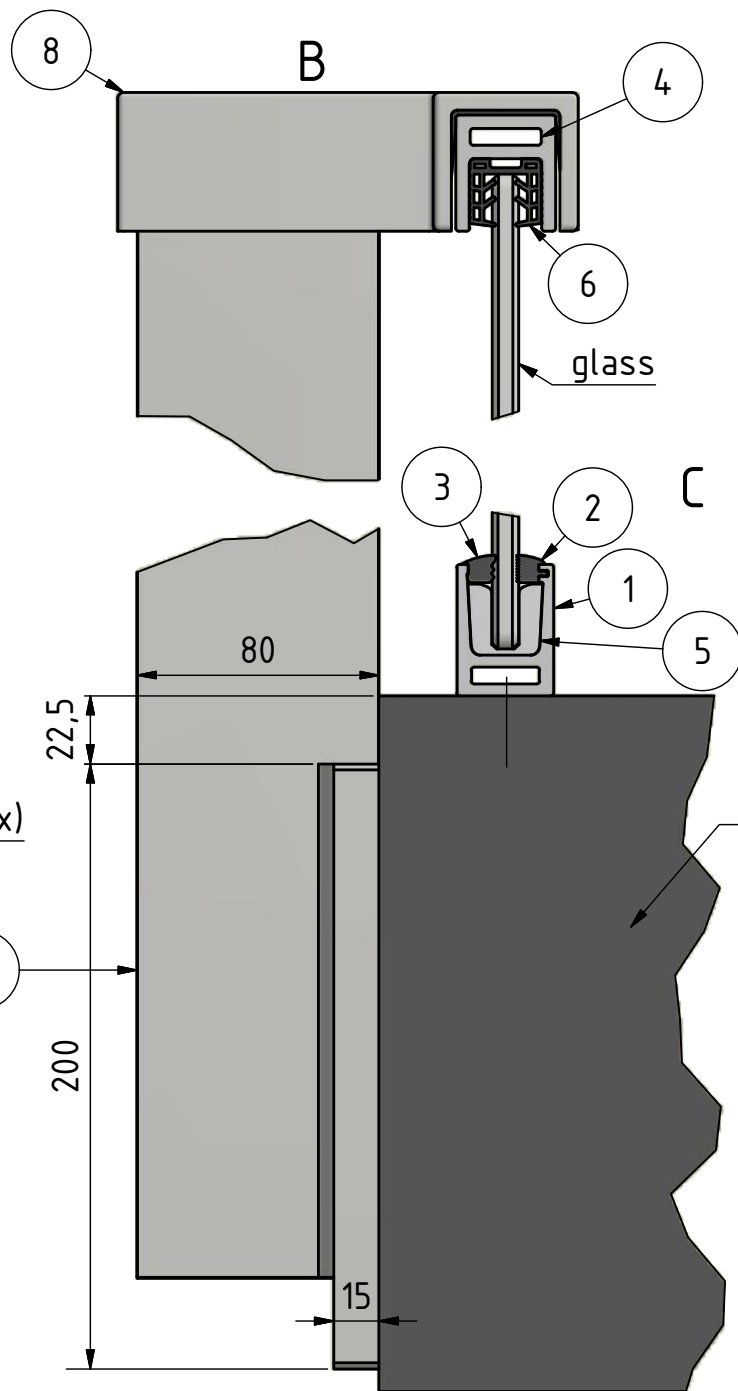


**Plate 2 - Generic Test Arrangement Point Load**





**Plate 3** - Generic view of Easy Glass Hybrid System Fascia Mount



fixed with  
MKT VMZ  
A4 110 M12 (4x)

22,5  
200

80

15

concrete  
floor

### PARTS LIST

ITEM	QTY	PART NUMBER	REV.	DESCRIPTION
1	1	166919500xx	0	Base shoe
2	1	19301890800	0	Rubber
3	1	19301790800	0	Rubber
4	1	166920339xx	0	Caprail
5	20	19313000800	1	Inlay for glass
6	1	19504220800	0	Rubber
7	3	110550080xx	0	
8	3	110860339xx	1	Caprail connector



Scale: 1:- Weight: Rev.No.: 0

Material:  
Finish:

THIS DRAWING IS PROPERTY OF Q-RAILING EUROPE GmbH & Co KG  
ALL RIGHTS RESERVED. It may not be submitted for perusal to third  
parties, either whole nor partly, unless granted. It is not permitted to  
alter this drawing unauthorised, in any way.

Product line: **Easy Glass Hybrid**

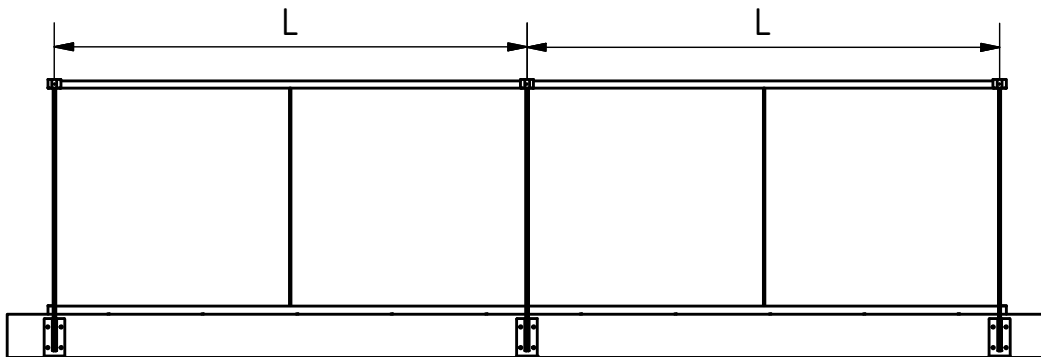
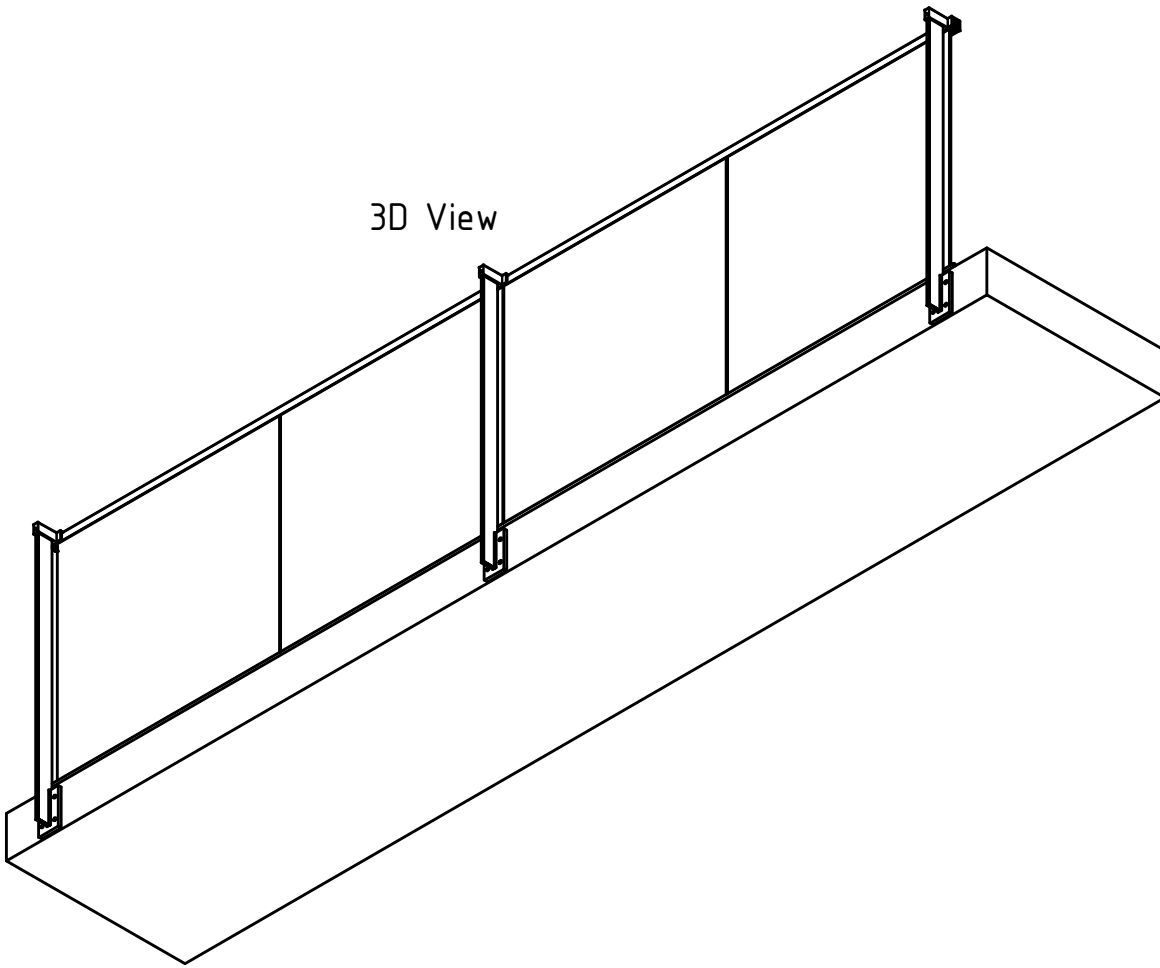
Date Name  
Drawn 05.01.2015 LKA  
Checked


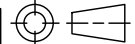
Description:  
**with posts side mount, 33mm caprail**

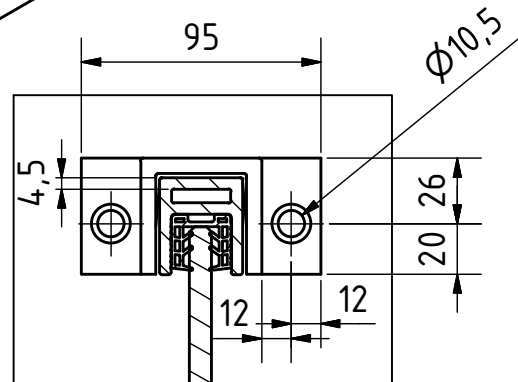
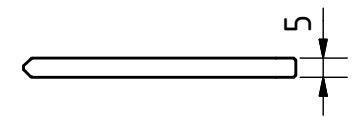
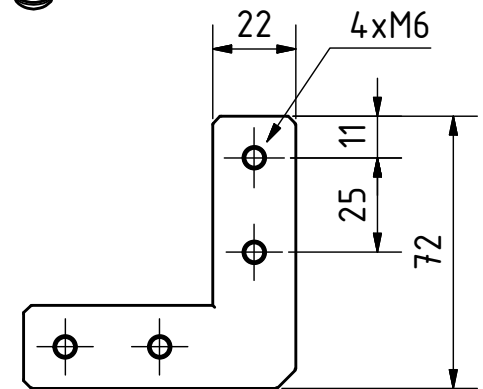
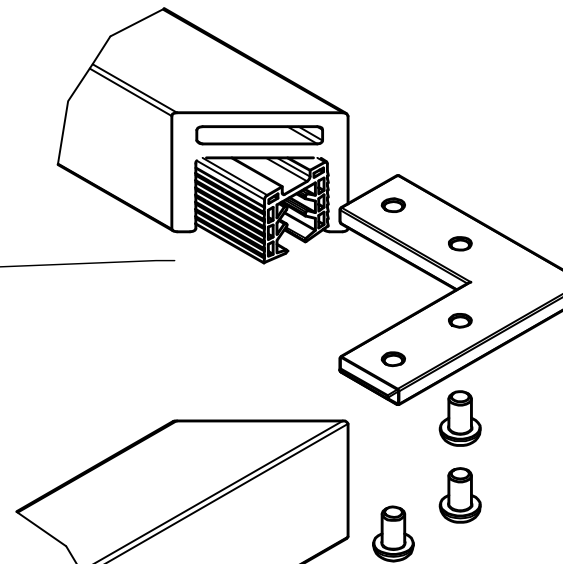
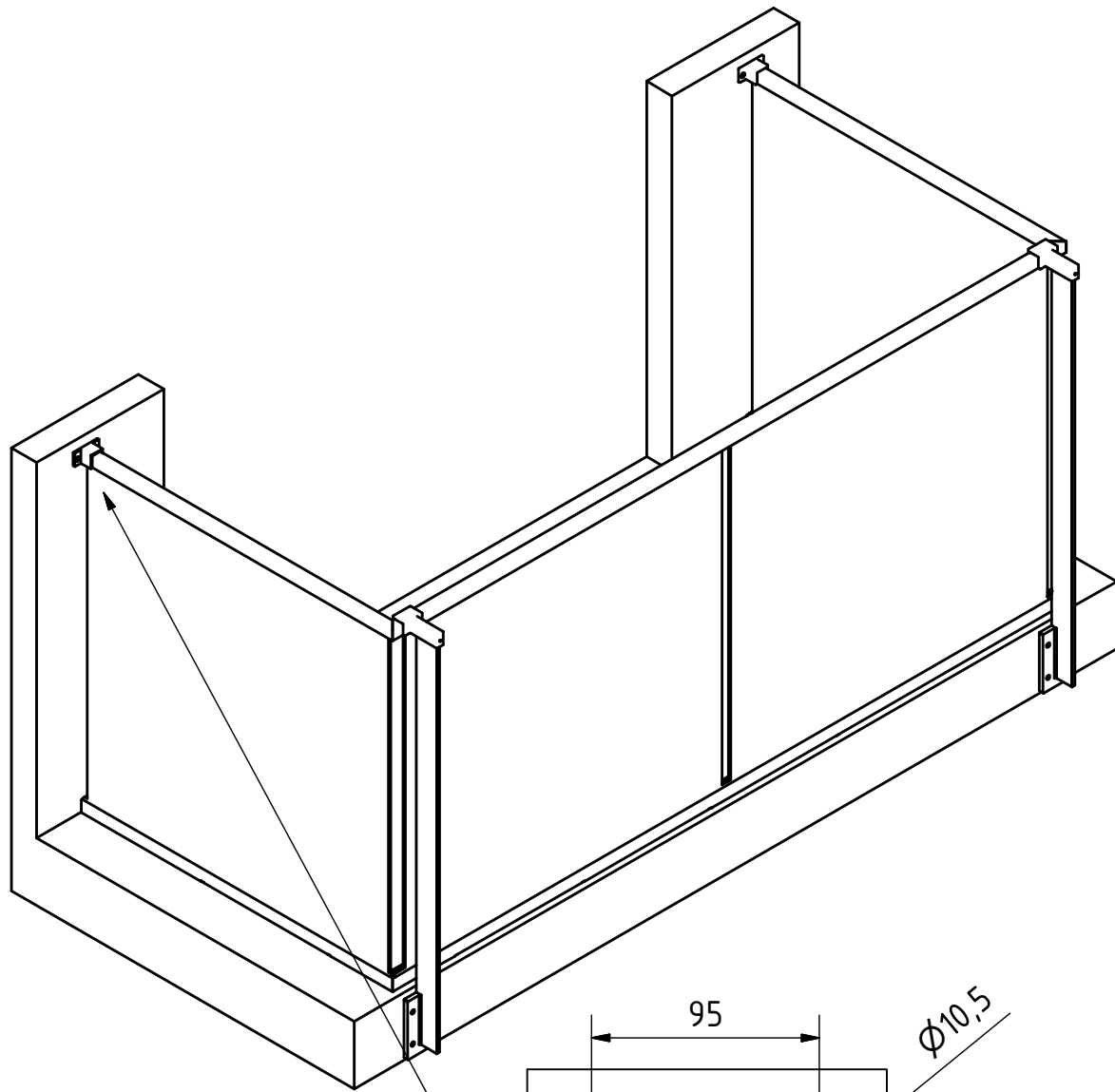
General tolerance according Drawing no.: Sheet: 1 / 3  
A4

REV	DESCRIPTION	DRAWN	DATE
0			

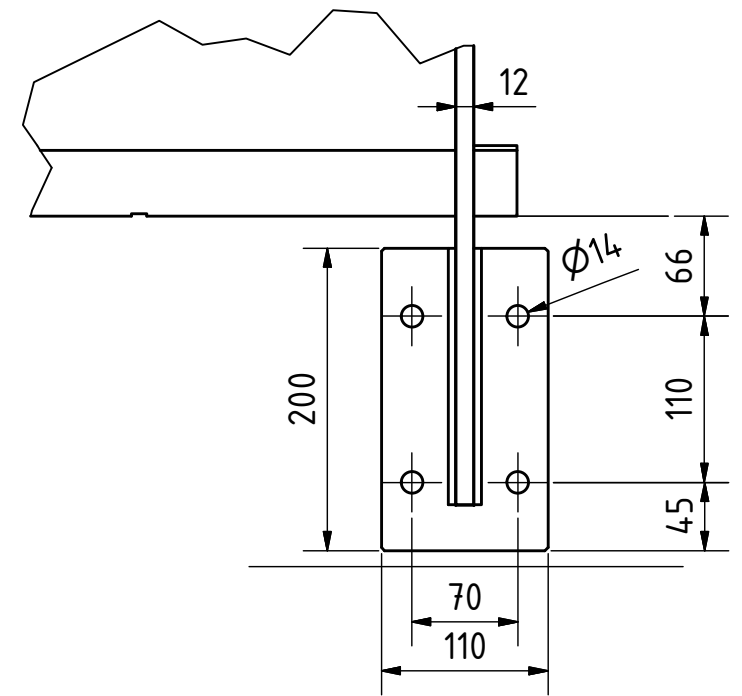
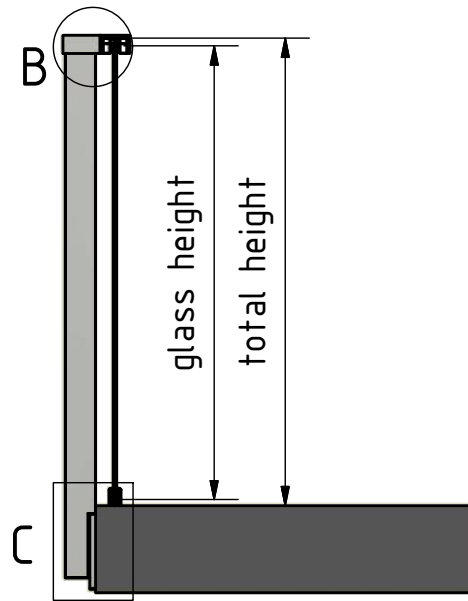
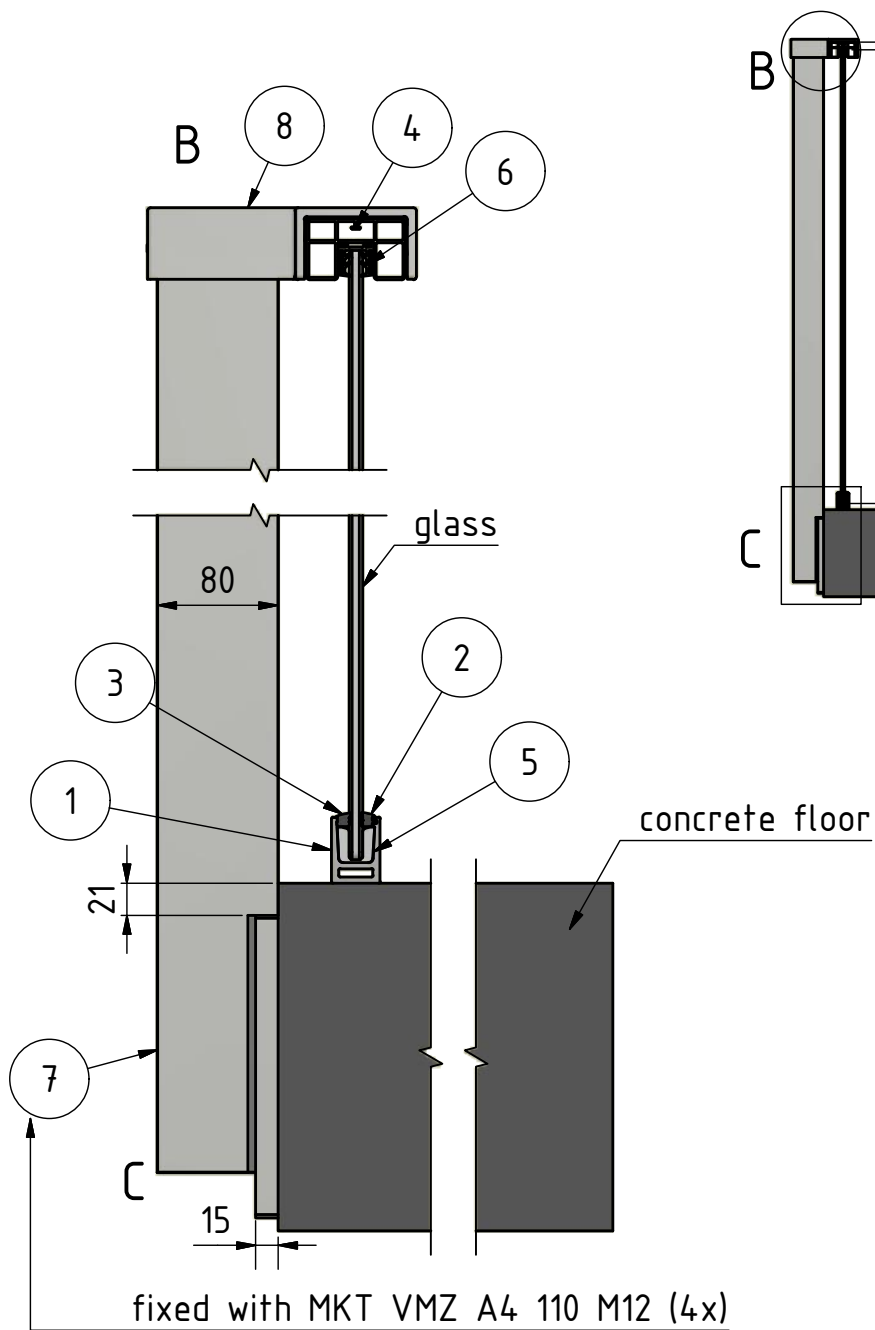
3D View



		Scale: 1:-	Weight:		Rev.No.: 0					
		Material:			Finish:					
<small>THIS DRAWING IS PROPERTY OF Q-RAILING EUROPE GmbH &amp; Co KG ALL RIGHTS RESERVED. It may not be submitted for perusal to third parties, either whole nor partly, unless granted. It is not permitted to alter this drawing unauthorised, in any way.</small>		Product line: Easy Glass Hybrid								
<table border="1"> <tr> <th>Date</th> <th>Name</th> </tr> <tr> <td>05.01.2015</td> <td>LKA</td> </tr> <tr> <td>Checked</td> <td></td> </tr> </table>	Date	Name	05.01.2015	LKA	Checked		Description: with posts side mount, 33mm caprail			
Date	Name									
05.01.2015	LKA									
Checked										
General tolerance according		Drawing no.:			Sheet: 2 / 3 A4					



		Scale: 1:-	Weight:		Rev.No.: 0
		Material:			
<small>THIS DRAWING IS PROPERTY OF Q-RAILING EUROPE GmbH &amp; Co KG ALL RIGHTS RESERVED. It may not be submitted for perusal to third parties, either whole nor partly, unless granted. It is not permitted to alter this drawing unauthorised, in any way.</small>		Product line: Easy Glass Hybrid			
Drawn 05.01.2015 LKA	Date	Name	Description: with posts side mount, 33mm caprail		
Checked			Drawing no.:		
General tolerance according					Sheet: 3 / 3 A4



### PARTS LIST

ITEM	QTY	PART NUMBER	REV.	DESCRIPTION
1	1	166919500xx	0	Base shoe
2	1	19301890800	0	Rubber
3	1	19301790800	0	Rubber
4	1	166920654xx	0	Caprail
5	24	19313000800	1	Inlay for glass
6	1	19504220800	0	Rubber
7	3	110550080xx	0	
8	3	110860654xx	1	Caprail Connector

Q-railing

Scale: 1:-

Weight:

Rev.No.: 0

Material:  
 Finish:

Product line: **Easy Glass Hybrid**

Description: **with posts side mount, 65 mm caprail**

Drawing no.:

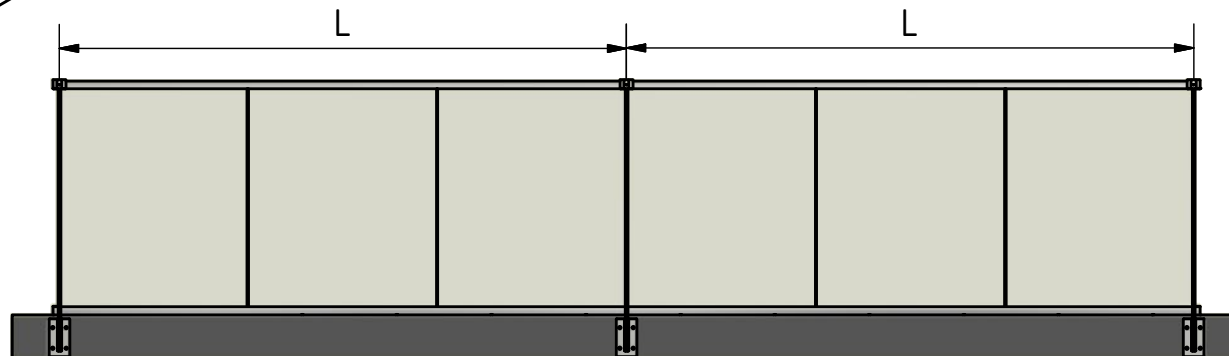
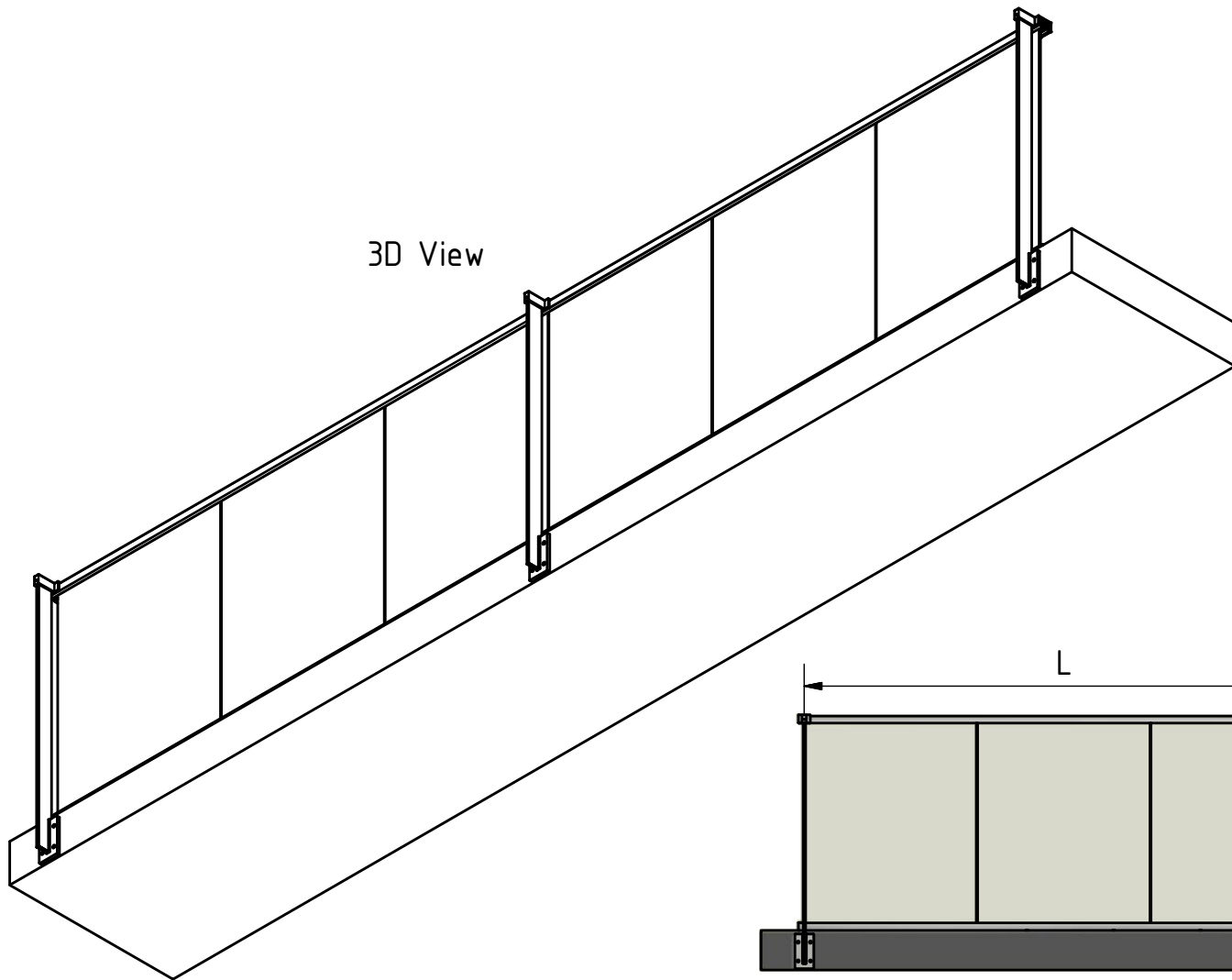
Sheet: **1 / 3**  
**A4**

Date: 07.01.2015  
 Name: LKA

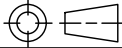
Drawn: 07.01.2015  
 Checked:

General tolerance according

REV	DESCRIPTION	DRAWN	DATE
0			



**Q-railing**

Scale: 1:- | Weight: |  | Rev.No.: 0

Material:  
Finish:

THIS DRAWING IS PROPERTY OF Q-RAILING EUROPE GmbH & Co KG  
ALL RIGHTS RESERVED. It may not be submitted for perusal to third  
parties, either whole nor partly, unless granted. It is not permitted to  
alter this drawing unauthorised, in any way.

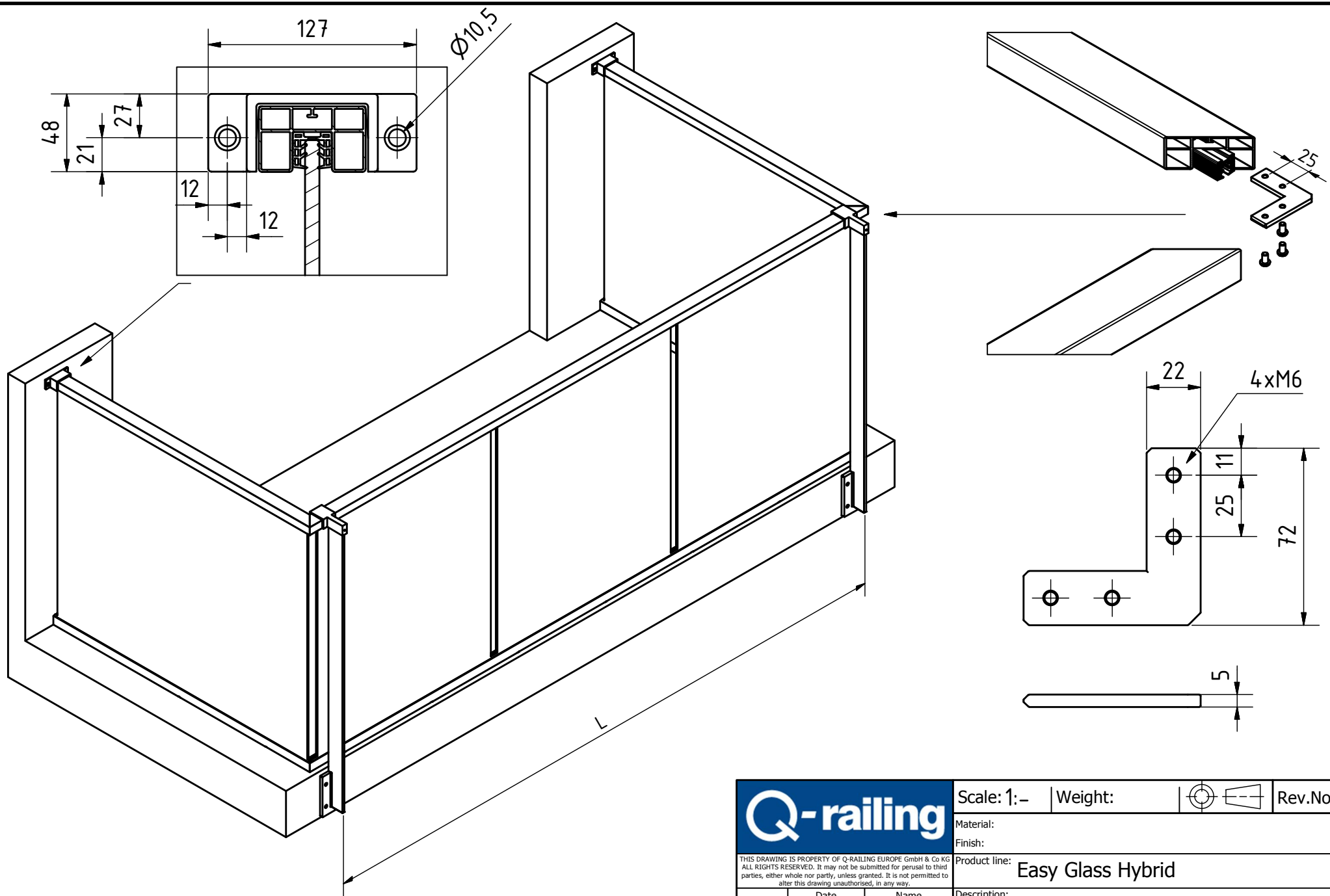
Product line: **Easy Glass Hybrid**

	Date	Name
Drawn	07.01.2015	LKA
Checked		

Description:  
**with posts side mount, 65 mm caprail**

General tolerance according

Drawing no.: | Sheet: **2 / 3**  
A4



		Scale: 1:-	Weight:		Rev.No.: 0
		Material:			
Finish:					Product line: Easy Glass Hybrid
<small>THIS DRAWING IS PROPERTY OF Q-RAILING EUROPE GmbH &amp; Co KG ALL RIGHTS RESERVED. It may not be submitted for perusal to third parties, either whole nor partly, unless granted. It is not permitted to alter this drawing unauthorised, in any way.</small>					Description: with posts side mount, 65 mm caprail
Drawn	Date	Name	Drawing no.:		
Checked	07.01.2015	LKA	Sheet: 3 / 3		
General tolerance according			A4		

GOOD LUCK WITH  
YOUR INSTALLATION!

VIEL ERFOLG MIT  
IHRER MONTAGE!

SUCCES MET  
DE INSTALLATIE!